

## GENERAL INFO - BEFORE YOU START

- Installers should be trained or experienced to install and understand the product.
- Read and understand all technical datasheets and installation instructions before attempting to install, remove or adjust any Profit piping products.
- Depressurize and drain the sprinkler installation system before attempting to install, remove or adjust any Profit piping products.
- Never work on piping-systems that are pressurized and /or filled with water.
- Use the necessary Personal Protection Equipment (PPE) to avoid personal injury (helmet, safety shoes, goggles, Profit gloves).
- Use appropriate tooling:
  - Profit groove meter and/or center punch tool
  - Impact-wrench and torque-wrench
  - Correct socket size:



Bolt size	Socket
	mm
M8 (1/4)	13
M10 (3/8)	15
M12 (1/2)	18
M14 (9/16)	21
M16 (5/8)	24
M20 (3/4)	30


**Failure to follow these instructions could result in death or serious injury and property damage.**

**We advise to always store our products in closed and dry environments, the products do not need any specific maintenance once installed on an aboveground sprinkler installation.**

## INSTALLATION INSTRUCTIONS


Note: for proper sealing, GSF16 flanges require a smooth and hard surface on the mating flange or device. We offer an optional steel insertion ring (RING GSF), that must be used when installing the GSF16 against a rubber faced flange or device (example wafer butterfly valve).

**1**



Check the end of the pipe, in the sealing area, to make sure that there are no bumps, holes or loose coating particles. Remove these first, in order to prevent leaks. Always check the rubber gasket to ensure that it is suitable for the intended service.

**2**



The outer diameter of the housing and the groove diameter must match the specifications provided by Profit; please review the page with groove specifications.

**3**



Apply a thin coat of Profit lubricant\* into the interior of the flange halves before installation. Also apply lubricant on the sealing area of the pipe.



**4**




Always check the gasket if it's damage free. Slide the gasket over the end of the pipe until it reaches the groove. Be sure to install in the right position (gasket markings face the split flange).


**5**



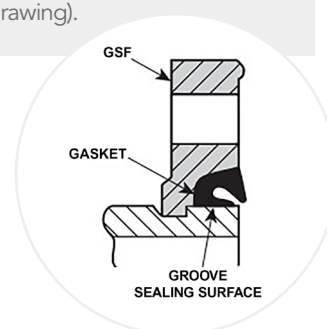
Install the open split adapter on the pipe around the groove part of the pipe. Check if the gasket is still in the right position. Install the 2 bolts and tighten until the flange bolt holes match. Always check the gasket during the full tightening.



**6**



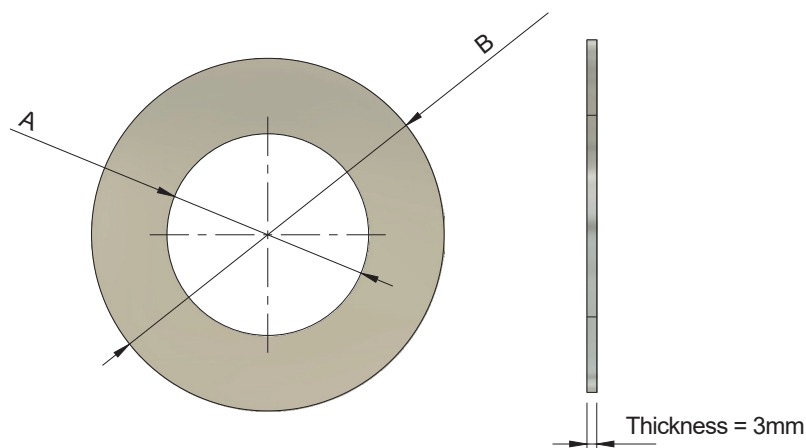
**Always check!**  
After full installation the split adapter flange must be full closed onto the groove of pipe's part, and the gasket must be well positioned around the end of the pipe, and inside of the split adapter flange. Check once more the gasket markings are not visible. The flange sealing lip will extend a little bit from the flange (see photo and drawing).



\*PROFIT LUBRICANT: PROLUBE XTREME, PROFIT GLIDEX-30 OR PROFIT SILICONE FREE LUBRICANT.

## EXCEPTION

When installing GSF against a rubber facing (rubber lined piping, rubber faced flange, wafer butterfly with rubber facing) there is the need of installing an extra insertion steel ring type RING GSF.



## INSTALLATION

The ring will be installed between the GSF rubber gasket facing and the mating rubber facing.

## MATCHING RING GSF DIMENSIONS

GSF16 size	A	B
2"	60	102
2,5"	77	122
3"	90	140
4"	115	158
5"	140	188
6"	169	217
8"	217	272
10"	272	320

